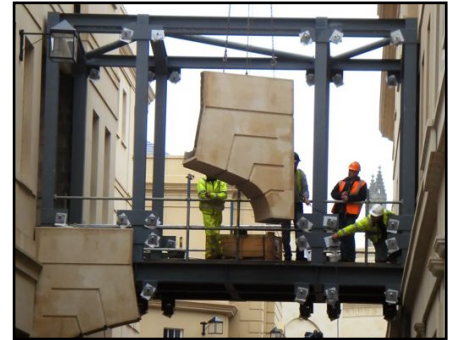


## Master of Science and Postgraduate Diploma in Façade Engineering (Full-time and part-time)



The programme is run by The Department of Architecture and Civil Engineering (A&CE) at the University of Bath with input and support from the Centre of Window and Cladding Technology. Typical applicants include engineers, architects, contractors and manufacturers with current students having between 2-10 years facade experience.

Master of Science and Postgraduate Diploma programmes in facade engineering are offered in two modes:

*Full-time:* 12 months

*Part-time:* 24 months up to a maximum of 48 months

Study on the taught elements of the MSc programme may lead to the award of a Diploma in Façade Engineering. Completion of a

dissertation will lead to an MSc Façade Engineering.

The programme requires attendance at 10 four-day units comprising 8 core and 2 optional units.

The programme may be studied full-time over a period of twelve months for the MSc or nine months for the Diploma. In part-time mode the Diploma and MSc must be completed in a maximum period of 48 months. Units may also be undertaken separately solely for the purpose of CPD.

The taught Units are common to both MSc and PG Diploma. Students studying units for CPD can choose whether or not to be assessed.

*Deadline:* EU applications for the 2010/11 academic year should normally be received by:

**23rd July 2010**

**ONLY ONLINE APPLICATIONS  
WILL BE ACCEPTED AT:**

[https://secure.bath.ac.uk/  
prospectus/cgi-bin/applications.pl](https://secure.bath.ac.uk/prospectus/cgi-bin/applications.pl)

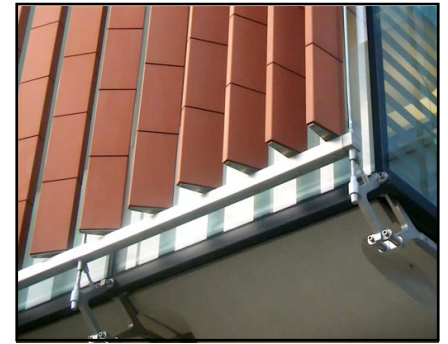
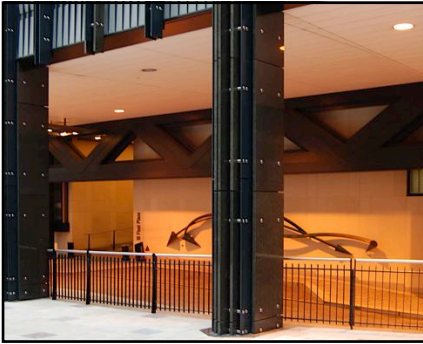
*For further enquiries please contact:*

**Dr Steve Lo**

T: +44 (0) 1225 386941

E: [s.n.g.lo@bath.ac.uk](mailto:s.n.g.lo@bath.ac.uk)

W: <http://www.bath.ac.uk/ace/msc-facade-engineering/>



### Core units

Unit Code	Unit Title	Credits	Prerequisites
AR50372	<i>Introduction to façade engineering</i>	6	
AR50373	<i>Façade materials and components</i>	6	AR50372
AR50377	<i>Glass and glazing</i>	6	
AR50376	<i>Weathertightness</i>	6	AR50372
AR50351	<i>Thermal performance of facades</i>	6	
AR50375	<i>Structural integrity</i>	6	AR50372
AR50374	<i>Façade construction</i>	6	AR50372
AR50378	<i>Façade procurement</i>	6	AR50372

### Optional units (Select two from below)

Unit Code	Unit Title	Credits	Prerequisites
AR50347	<i>Daylight and shading</i>	6	
AR50349	<i>Natural ventilation in buildings</i>	6	
AR50382	<i>Contract management</i>	6	AR50372 + AR50378
AR50379	<i>Thermal analysis of facades</i>	6	AR50372 + AR50351
AR50381	<i>Structural analysis of facades</i>	6	AR50372 + AR50375
AR50380	<i>Acoustics &amp; Fire</i>	6	